

# Warwick Sewer Authority

125 Arthur W. Devine Boulevard  
Warwick, RI 02886

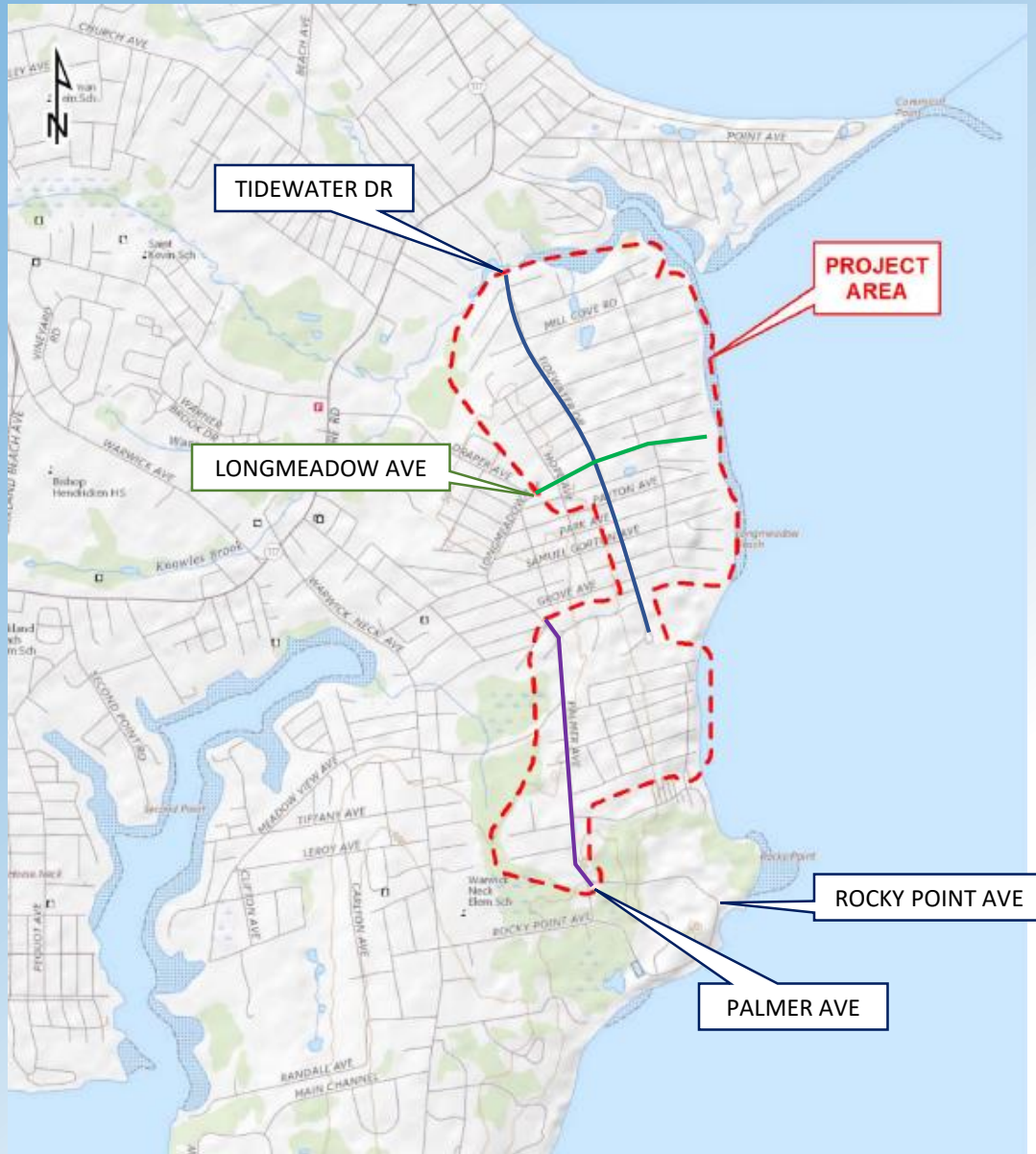
# Bayside Sewer Project Contract 86B

## Project Community Meeting September 16, 2021

Honorable Frank J. Picozzi, Mayor



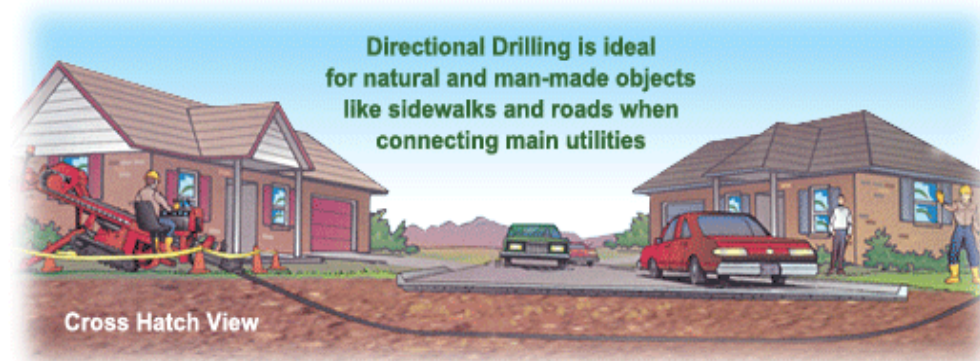
# Bayside Sewer Project – Contract 86B

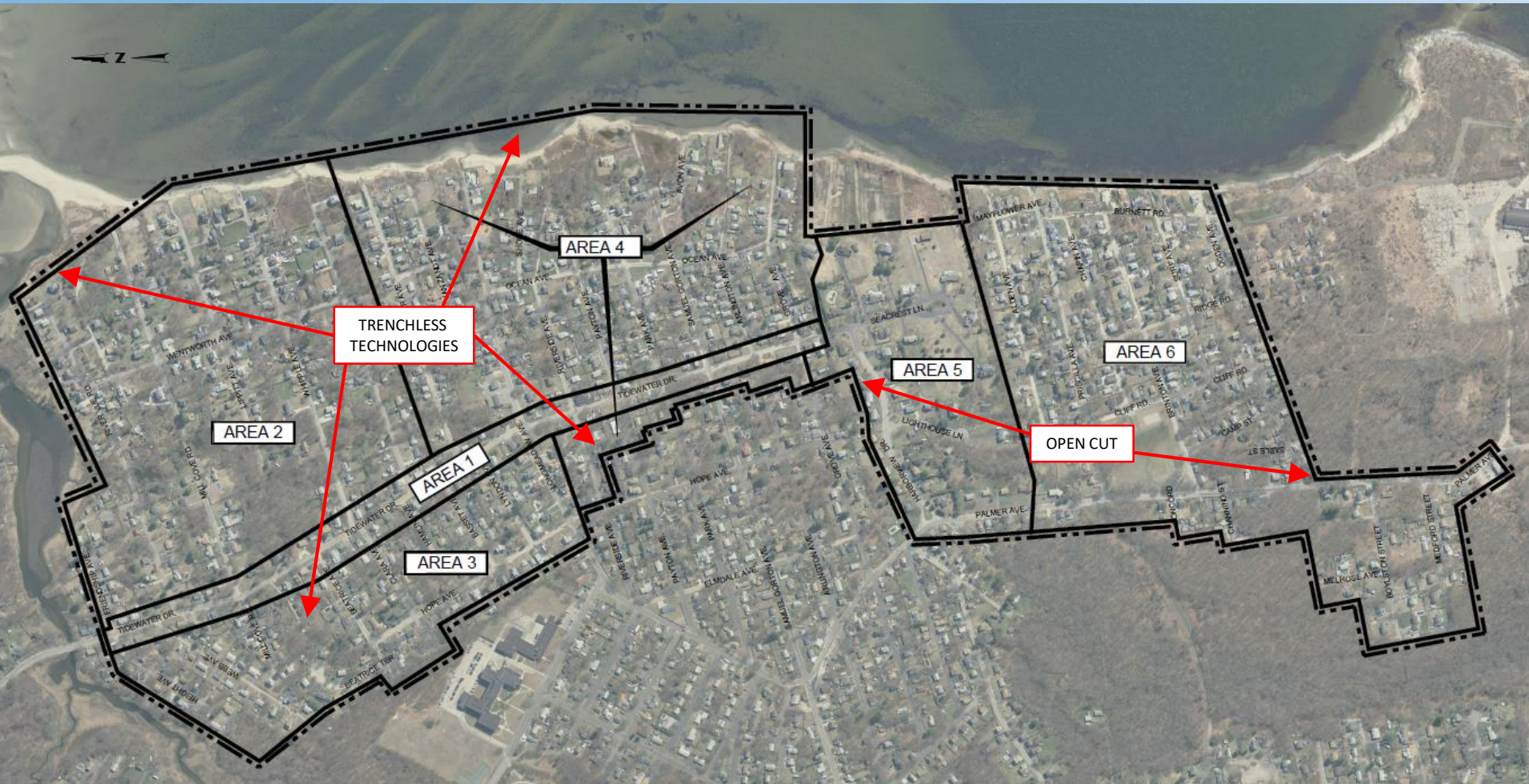


# Trenchless Technologies / Horizontal Drilling

- Utilized for communications, fiber-optic lines, water, sewer, and gas services.
- Why trenchless for the Bayside Sewer project:
  - To avoid cultural resources identified in the pre-design archaeological investigations, horizontal drilling minimizes damage to existing ground.
  - Minimizes traffic disturbance.

**Directional Drilling technology is an efficient cost effective process to get utilities, water and sewer lines from one point to another without destroying the existing ground or obstacles that are in between the two points. Directional drilling goes above and beyond traditional trenching; connecting utilities and services in places that trenching could not.**





## Bayside Sewer Project – Contract 86B

- Area's based on location.
- Contractor to determine sequence of construction.



# Bayside Sewer Project – Contract 86B

Streets along which service will be provided:

## Area 1:

Tidewater Drive

## Area 2:

Cady Ave.

Friendship Ave.

Lippitt Ave.

Mill Cove Rd.

River Vue Rd.

Wentworth Ave.

Whipple Ave.

## Area 3:

Bassett Ave.

Beatrice Ave.

Beatrice Terr.

Clara Ave.

Hamlin Ave.

Height Ave.

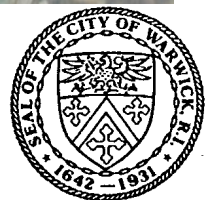
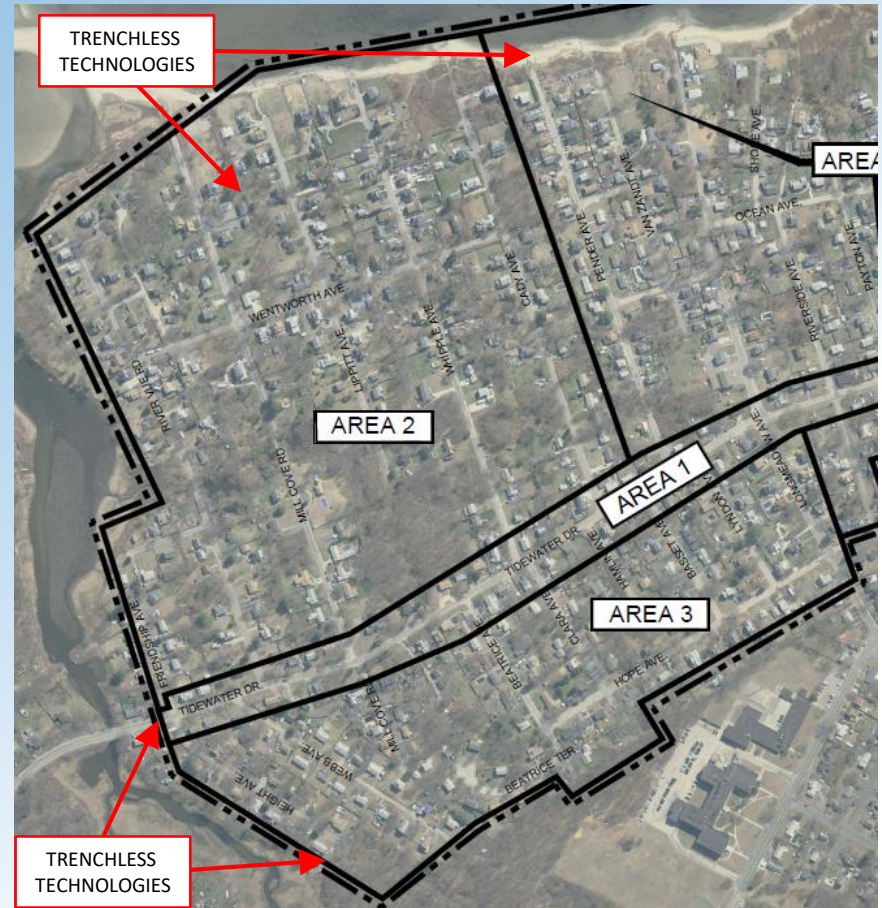
Hope Ave.

Mill Cove Rd.

Longmeadow Ave.

Lyndon Ave.

Webb Ave.

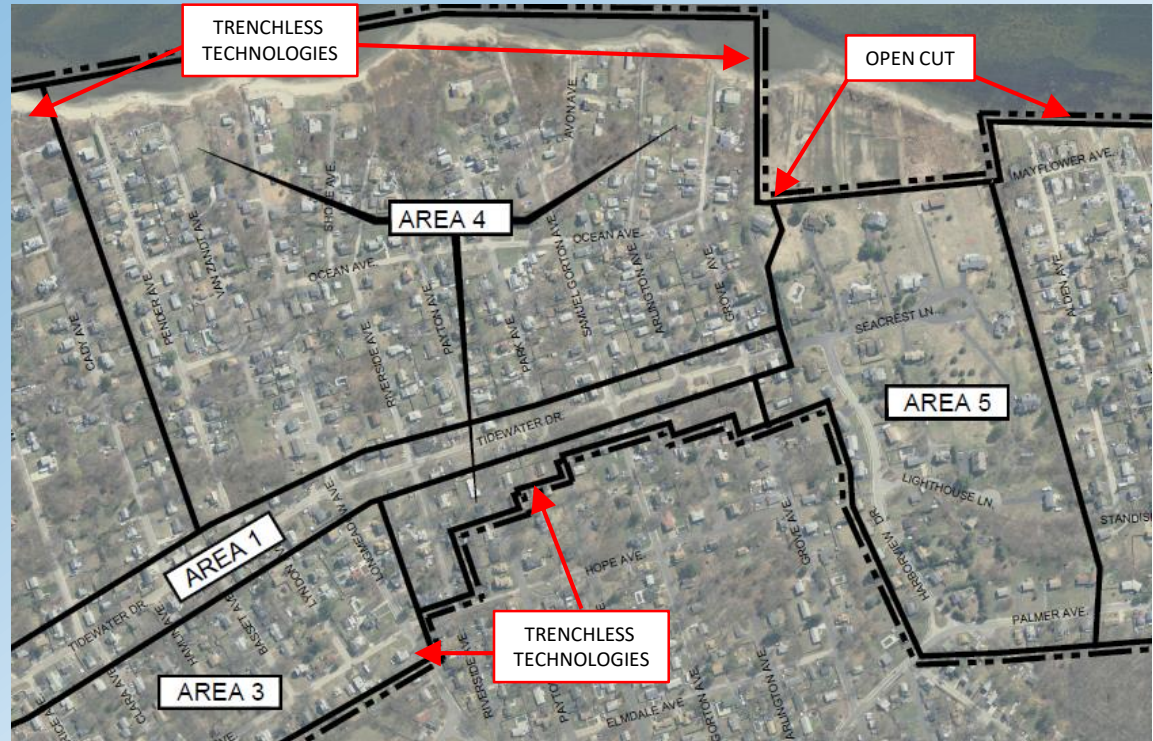


# Bayside Sewer Project – Contract 86B

Streets along which service will be provided:

## Area 4:

Arlington Ave.  
Avon Ave.  
Burns Ave.  
Currey Pl.  
Grove Ave.  
Longmeadow Ave.  
Ocean Ave.  
Payton Ave.  
Park Ave.  
Pender Ave.  
Riverside Ave.  
Samuel Gorton Ave.  
Shore Ave.  
Van Zandt Ave.



## Area 5:

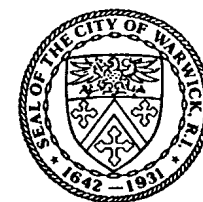
Harborview Dr.  
Lighthouse Ln.  
Palmer Ave.  
Seacrest Ln.





# Bayside Sewer Project – Contract 86B

- Sewer service to be provided to approximately 935 residential properties within the project area
- Collection system will consist of:
  - approximately 54,000 linear feet of new sewer main,
  - sewer main will be installed utilizing trenchless and open cut methods, approximately 55% / 45%.
- All residents within the project area will receive new sewer service laterals and service connections.
- Service connections are for the discharge of sanitary sewer flows (wastewater) only
  - connection of non-sanitary sources to the system (e.g., stormwater, groundwater, pool water) is prohibited by law





# Service Connection Forms

**FORM COMPLETION CHECKLIST**

- APPROXIMATE LOCATION OF FRONT DOOR INDICATED
- APPROXIMATE LOCATION OF DRAINFIELD/SEPTIC SYSTEM
- APPROXIMATE LOCATION OF CURRENT WASTE-PIPE EXIT LOCATION
- APPROXIMATE LOCATION OF GAS SERVICE OR N/A
- APPROXIMATE LOCATION OF WATER SERVICE
- PROPOSED LOCATION OF SEWER SERVICES

\_\_\_\_\_  
OWNER SIGNATURE

**WARWICK SEWER AUTHORITY**  
125 Arthur Devine Boulevard  
Warwick, Rhode Island 02886

**SERVICE LOCATION DIAGRAM**  
Not To Scale

**FORM COMPLETION CHECKLIST**

- APPROXIMATE LOCATION OF FRONT DOOR INDICATED
- APPROXIMATE LOCATION OF DRAINFIELD/SEPTIC SYSTEM
- APPROXIMATE LOCATION OF CURRENT WASTE-PIPE EXIT LOCATION
- APPROXIMATE LOCATION OF GAS SERVICE OR N/A
- APPROXIMATE LOCATION OF WATER SERVICE
- PROPOSED LOCATION OF SEWER SERVICES

\_\_\_\_\_  
OWNER SIGNATURE

**WARWICK SEWER AUTHORITY**  
125 Arthur Devine Boulevard  
Warwick, Rhode Island 02886

**SERVICE LOCATION DIAGRAM**  
Not To Scale

- New sewer service will be installed based on connection cards
- Locations determined by property owner for ease of connection



# Service Connection Forms

- Ensures that the sewer service connection is installed to the most practical and economical location
- Based largely on location of existing on-site system (shortest length to connect)
  - Need to avoid other utility services to dwelling (gas, sewer)
  - Further avoid disruption to other features – sprinklers, fences, trees, etc.
- GRA & WSA's 2019 coordination for Service Connections:
  - Resulted in ~460 connection cards completed of the 935 parcels
  - **Approximately 50% did not complete cards in 2019**
  - **Cards should be updated regardless of 2019 status**
- Service Connection Forms available at this meeting
  - Form may be taken, completed, and returned to the WSA
  - Field Inspectors will be available by appointment to assist homeowners with completion of form
  - Field inspectors will also canvass the project area prior to the start of construction to complete service cards



# Construction – What to Expect

- Construction Monday – Friday, 7 a.m. – 5 p.m.
  - Use of heavy construction equipment – excavators, loaders, trucks
  - Temporary road closures, construction signage for detours, police details
  - Temporary stockpiling of materials – sewer pipe, manholes, gravel bedding, etc.
  - Temporary patching over completed lengths of sewer trench
  - Coordination with residents affected by construction activity (for access/egress, to move vehicles as required)
  - Residence will receive notice before construction activities at each street. Residents will also receive notification of any modifications to the work schedule.
  - WSA and GRA to ensure that roadways are maintained in acceptable condition for duration of work
  - Streets will receive new asphalt paved roadways
  - Questions or concerns can be directed to the WSA or GRA Resident Engineer. Information will be posted on the WSA website.



# Anticipated Work - 2021

- Construction to begin October 2021 and is scheduled to be completed within 2 years.
- Contractor's provided 90 day schedule includes:
  - Tidewater Drive:
    - Directional Drilling / Trenchless technologies
  - Area 6:
    - Open cut excavation and installation of sewer main line
    - Mayflower Ave.
    - Alden Ave.
    - Standish Ave.
    - Priscilla Ave.
    - Cliff Rd.
    - Chapin Ave.
    - Brinton Ave.
    - Ridge Road
    - Palmer Ave.

